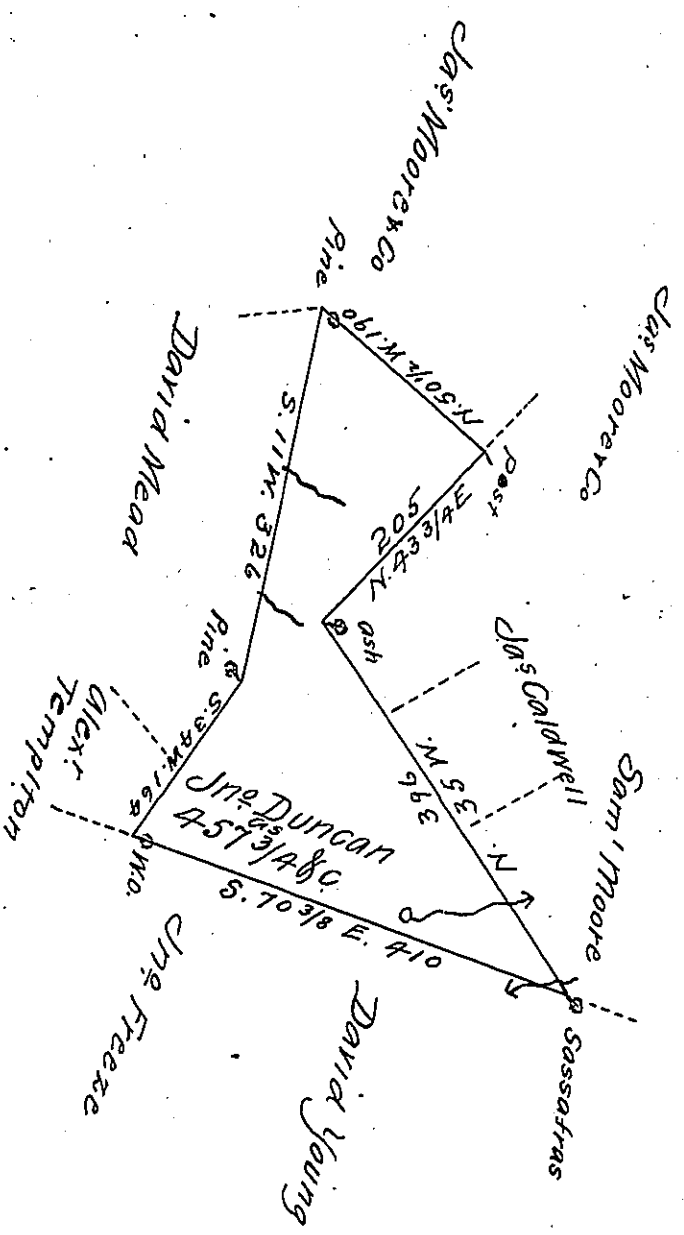


Pittston
(LUZERNE)



A Draft of a tract of land Called _____ Situate in the County of _____
 Luzerne Containing four Hundred and fifty Seven Acres $3/4$ & Allowance
 Surveyed for John Duncan the 3^d day of August 1793 by Virtue of a
 Warrant dated the 12th day of Jan^y 1793.

by W^m Gray D.S.

To Daniel Brodhead Esq^r }
 Surr^t Gen^l }

IN TESTIMONY that the above is a copy of the original remaining on file in
 the Department of Internal Affairs of Pennsylvania, made
 conformably to an Act of Assembly approved the 16th day of
 February, 1833, I have hereunto set my Hand and caused
 the Seal of said Department to be affixed at Harrisburg,
 this Ninth day of February 1911

Henry Houch
 Secretary of Internal Affairs.